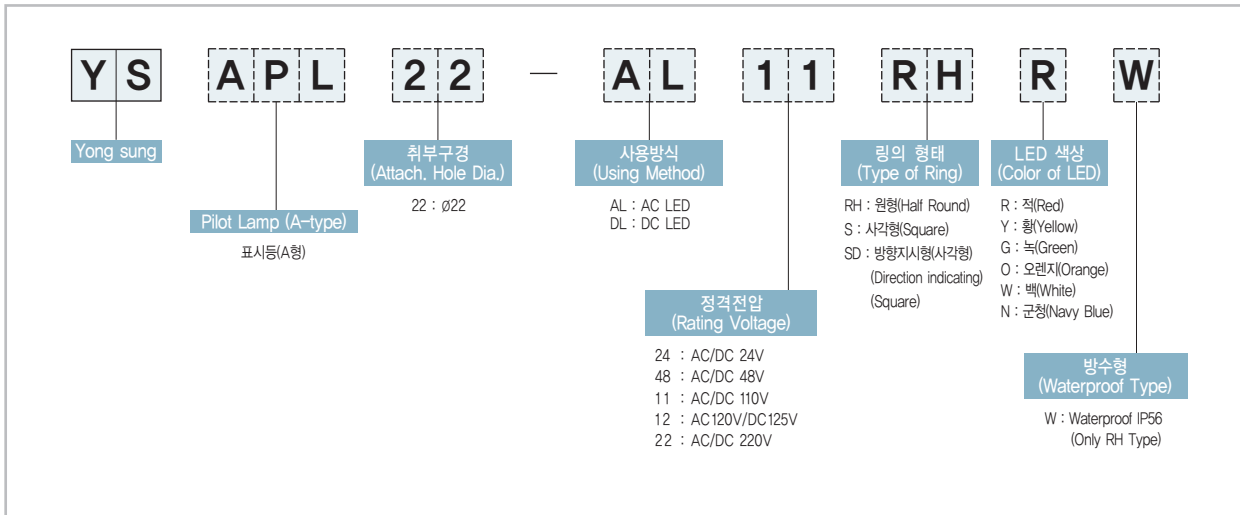


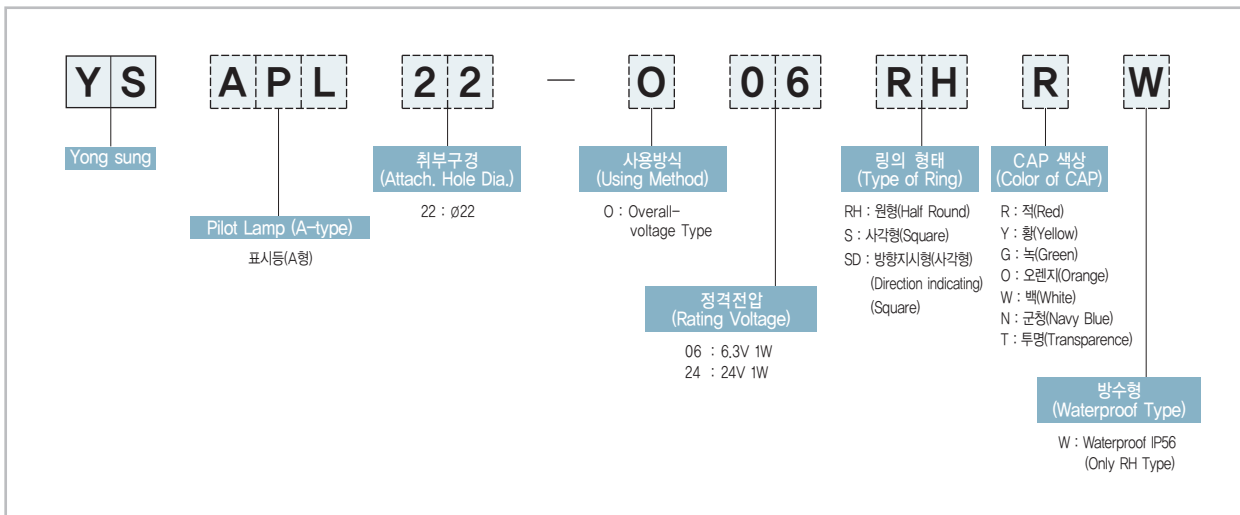
4-1

표시등 (A형)  
Pilot Lamp (A-type)

형식 구분도 | Type Classification Diagram - LED Type |



형식 구분도 | Type Classification Diagram - BULB Type |



제품 특징 및 구조 | Features and Structure of Product |

- 별도의 고정 링을 사용합니다. (Using separate lock ring.)
- 별도의 칼라판을 교환하게 되어 있습니다. (Can be replaced by other color plate.)
- 원터치 탈착방식 (One-touch removed type.)
- 보수 및 교체가 편리 (Easy for repair and replacement.)
- 칼라판에 문자각인하여 사용할 수 있습니다. (Possible to engrave on color plate.)

## 램프 정격 | Lamp Rating |

	LED TYPE	BULB TYPE
정격 전압 (Rating voltage)	AC/DC 24V, 48V, 110V, 220V, AC 120V/DC 125V	AC/DC 6.3V, 24V
2차 전압 (Secondary voltage)	24V	-
램프 정격 (Lamp rating)	Below 20mA	6.3V 1W, 24V 1W

## 부품 재질 | Part Materials |

부 품 (Part)	재 질 (Materials)
몸 체 (Body)	ABS 내열 (Heat resistance ABS) Resin
홀 다 (Holder)	ABS 내열 (Heat resistance ABS) Resin
단 자 (Terminal)	황동 (Brass)
볼 트 (Bolt)	SWRCH 10A (Zn plating)
캡 (Cap)	Polycarbonate Resin
링 (Ring)	ABS Resin (Optional plating)

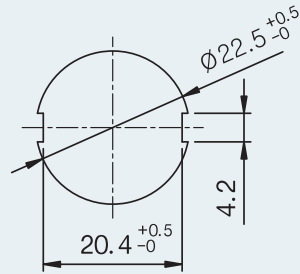
## 취급 설명서 | User Guide |

※ 항상 전기안전사고에 주의하시기 바랍니다. (ANYTIME BE CAREFUL OF ELECTRIC ACCIDENT.)

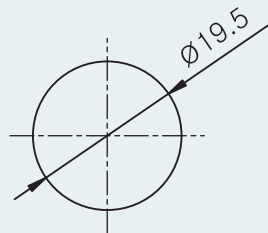
1. 제품의 겉모양과 동작에 이상이 없는지 확인합니다.
  2. 레버를 돌려서 조작부와 접점부를 분리합니다.
  3. 고정 링을 빼낸 후 조작부를 판넬에 삽입시키고 다시 고정 링으로 고정합니다.
  4. 분리된 접점부를 다시 조작부와 결합합니다.
  5. 조립 후 고정상태 및 동작상태를 확인하십시오.
1. Check the product shape and operation.
  2. Separate operation part and contact part by turning lever.
  3. After removing lock ring, insert operation part into panel and fix it once again with lock-ring.
  4. Combine separated contact part and operation part.
  5. Check the operation and fixes state after assembling.

판넬 가공 치수 | Panel Cut-out Dimension |

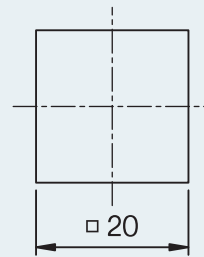
(unit : mm)



조각면 치수 | Size of Marking Plate |

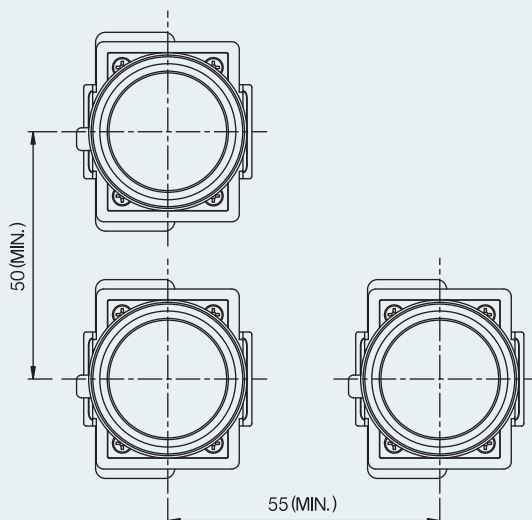


원형 (Round type)



사각형 (Square type)

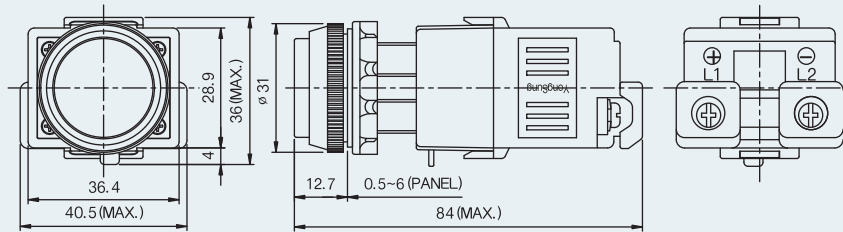
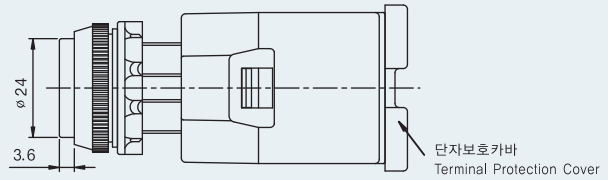
부착 간격도 | Attachment Interval Diagram |



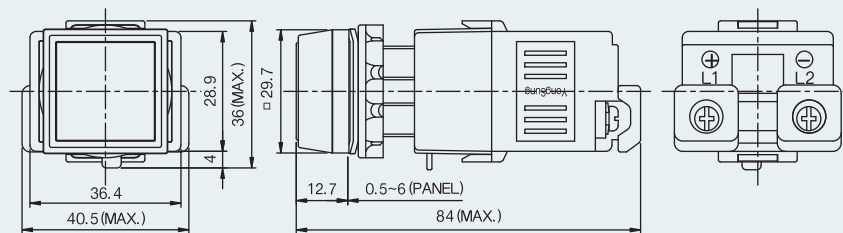
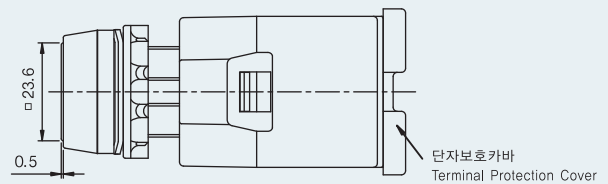
※결선 시에는 분리, 조립을 위해 항상 충분한 여유를 갖고 결선하시기 바랍니다.

(Wiring moment, Anytime getting enough wiring margin for separation and assembling.)

RH-Type  
(Half Round)



S(D)-Type  
(Direction indicating Square)



※ 단자보호카바는 별매품임. (Terminal protection cover is option.)