

G13

IP 66



IK08



- T8 fluorescent lamps
- Central locking
- Switch with safety lock; when opening the central lock, all poles of the voltage supply to the ballast are disconnected
- In case of a lamp fault, the electronic ballast disconnects the defective lamp from the power supply
- PSF 218M- use in underground mines

PSF



CONSTRUCTION

Enclosure: SMC polyester plastic reinforced with glass fiber

Diffuser: PC polycarbonate plastic

Gasket: silicone

Central locking: can be opened/closed using a socket key SW8, hinged lamp cover

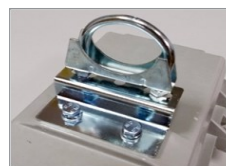
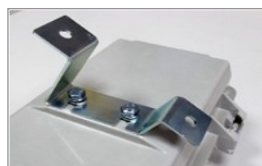
The light fitting is normally supplied without light sources, socket key screw, two Ex eb cable glands M25, two Ex eb plugs M25 and with four ring screw M8 (pendant version).

TECHNICAL DATA

Certificate:	FIDI 19 ATEX 0025, EAC RU C-HR.HB07.B.00276/20 FIDI 19 ATEX 0007X (type PSF 218)
Marking:	CE 0722
Apparatus category:	II 2GD I M2 (type PSF 218)
Marking of explosion protection:	Ex db eb mb IIC T4 Gb Ex tb IIIA/IIIC T80°C Db, Ex db eb mb I Mb
Ambient temperature:	-30°C ≤ Ta ≤ +50°C [ATEX]
Degree of protection:	IP 66, category 1
Resistance to shock:	IK 08
Protection class :	I (protective earthing)
Rated voltage:	220....240 V (±10%)
Frequency:	50/60 Hz
Power factor:	λ=0,95
Ballast lumen factor:	98%
Light output ratio:	η=0,78%
End of life switch:	The electronic ballast, type SMP fulfills the requirements according to EN 61349-2-3+A11:2017 ("end of life effect")
Estimated service life(for el.ballast) :	70 000 h at T _{amb} =40°C
Connecting terminals:	L1, L2, L3, N, PE - max. 2,5 mm ²
Cable entry:	Two entries Ex eb M25x1,5 for cable diameters Ø7-15 mm, and two Ex eb plugs
Through wiring:	5 x 1,5 mm ² , max. 16 A, or looping of the cables (entry and exit on one side)
Packing:	The packing contains: 1 pcs PSF 218 1380x250x180 mm PSF 236 800x250x180 mm PSF 258 1700x270x210 mm

MOUNTING

Pendant, on pipe, wall, ceiling

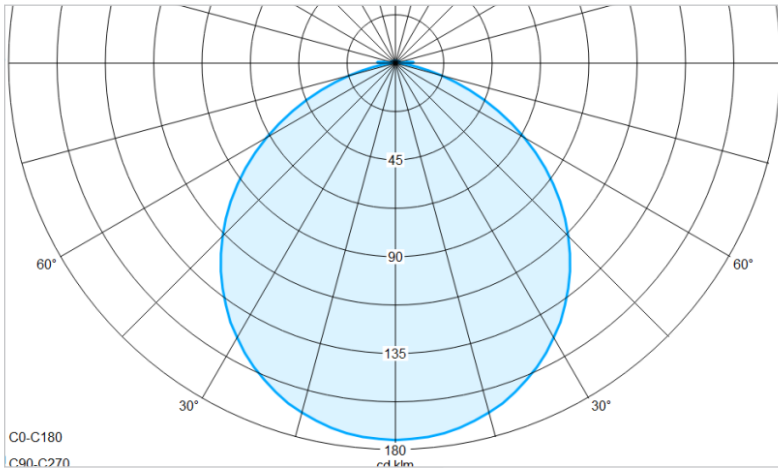


Fluorescent light fitting

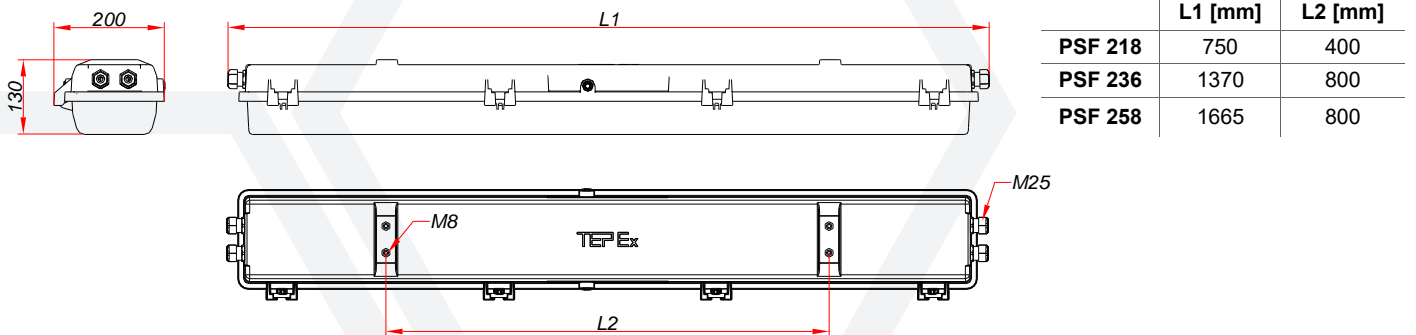
MODEL CODE

Model code	Max. Wattage	Lamp type	Nominal voltage	Luminous flux [lm]	Lamp holder	Nominal operational current	Weight
PSF 218	2x18 W	T8	230 V	2 x 1350	G13	0,17 A	7,5 kg
PSF 236	2x36 W			2 x 3350		0,33 A	10 kg
PSF 258	2x58W			2x 5200		0,5 A	12 kg

POLAR CURVE



DIMENSION DRAWING (mm)



SPARE PARTS AND ACCESSORIES

Sketch	Description	Code	Sketch	Description	Code
	Diffuser PSF	PSF218 10-120 PSF236 20-120		Metal cable gland for arm cable	PSF 30-160
	Gasket PSF	PSF218 10-130 PSF236 20-130		Ex e plug M25	SPC 25
	Internal reflector with lamp holder PSF	PSF218 10-140 PSF236 20-140		PSF Wall / Ceiling mounting set	PSF 30-110
	El. ballast SMP	SMP 08/11 (PSF 218, 236) SMP 08/12 (PSF 258)		PSF Pipe mounting set	PSF 30-120
	Terminals 5x2,5mm ²	PSF236 20-150		PSF Wall / Ceiling mounting set	PSF 30-130
	Socket key SW8	PSF236 20-160		Ring bolt M8	PSF 30-140

All technical data is relevant at the time of print.