

! DANGER / 危险

HAZARD OF ELECTRIC SHOCK, EXPLOSION, OR ARC FLASH
Disconnect all power before servicing equipment.

Failure to follow these instructions will result in death or serious injury.

电击、爆炸或电弧危险
在检修设备之前，请断开所有电源。
若违背这些说明，
则可能会导致严重的人身伤害甚至死亡。

Help & Download

For more technical support, please visit www.samwha-dsp.com or QR code
请访问 www.samwha-dsp.com 或 QR code 下载有关技术资料

info@samwha-dsp.com

Zhejiang Hannuo Electric Co., Ltd.
浙江韩诺电气有限公司
Jiaxi Industrial Zone, Liushi Town, Yueqing
Zhejiang, China
浙江省乐清市柳市镇溪西工业区

Authorized technical engineers only for installation, maintenance or repair. 所有电器的安装和维护必须由获得认证的电气技工操作完成。

Adjust the settings according to the electric characteristics of a motor, an inappropriate setting may cause permanent damage on the motor. 以电机特性来设定好跳闸时间和额定电流，若误设定会造成电机烧损。

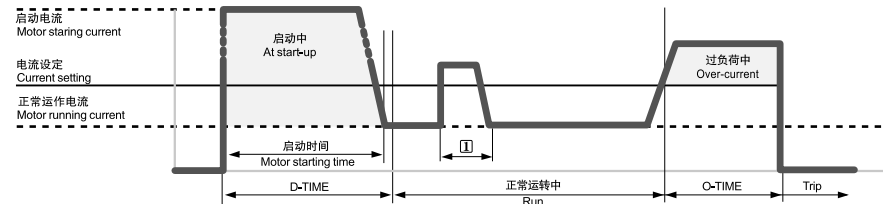
External filter should be installed to reduce harmonics in an environment where the AC power contains excessive harmonic than IEC standard. No installation in the site may result in accuracy problem, abnormal operation and mal-function.

在高谐波含有IEC规定以上的现场上，需配备外部滤波器，未配备滤波器会因为产品受到干扰而产生误动作。

Please contact Customer Care center when our product is installed for devices containing SCR such as inverters. 若有变频器、SCR来控制负荷，请咨询到本公司。

Check periodically whether our product works properly by pressing and holding the test button. 为了保证正常动作，请定期确认产品动作状态。

18 months warranty from the date of shipment. 我公司对于物流中心出库后18个月内出现问题产品进行免费维修。



The trip is deactivated until the over-current run time is longer than O-time. 虽然感知过电流，如果比设定的 O-Time 时间短则不会动作。

Terminology / 用语定义
Control Power / 控制电源, Trip / 超负荷运转
LOAD / 电流设定, TEST / 测试, RESET / 复位
D-TIME(Delay Time) / 启动延迟时间设定
O-TIME(Operating Time) / 跳闸延迟时间设定

Setting instruction / 设定方法
D-TIME : Set two to three seconds longer than the motor starting time. 确定电机启动时间后，加长2-3秒设定

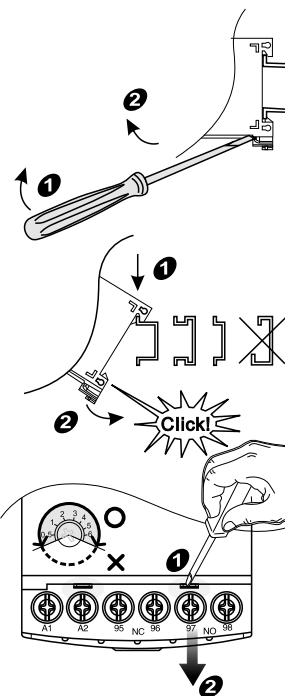
O-TIME : Over-current run time. Set less than the motor's endurance time with over-current. 过负荷动作时间来确定电机长短时间

LOAD : Set over 110% of the motor's rated current or under 120% of its operating current. 电机的额定(FLC)电流>110%或者运转电流<105%~120%

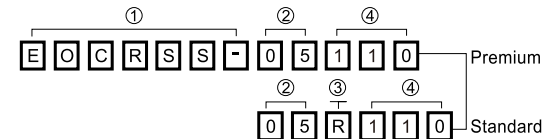
TEST instruction / 测试方法

With Test button held down, the red LED is on and the product will trip after O-TIME
The relay will be de-energized when RESET button is pushed or the control power is disconnected.
按TEST按钮，就亮起红色LED灯，经过O-TIME后，输出接点动作，这属于正常。
按下 Reset Button 或切断 Control Power 则立即复位。

Installation / 安装方法



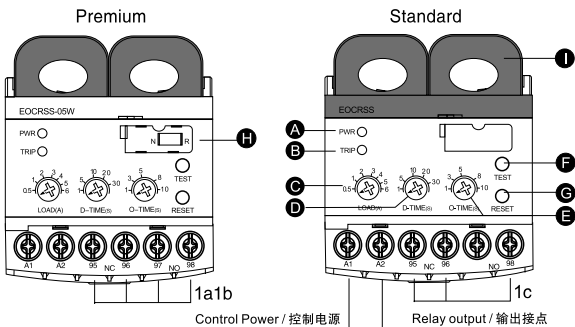
How to order / 订购方法



EOCRSS		Electronic Over-current Relay				
EOCRSSD		Electronic Over-current Relay				
SS		CCC Certification				
SSD		电子式过载继电器 GB14048.4-2010				
No	Item	Model Type	Current Range / 电流范围			
②	Standard 标准型	ALL	05	0.5...6A		
			30	3...30A		
			60	5...60A		
			D1	10...120A	100:5 2CT (100:5 CT combination)	
			DH	15...180A	150:5 2CT (150:5 CT combination)	
②	External CT Type CT组合型	ALL	D2	20...240A	200:5 2CT (200:5 CT combination)	
			D3	30...360A	300:5 2CT (300:5 CT combination)	
			D4	40...480A	400:5 2CT (400:5 CT combination)	
			③	Relay output 触点状态	SS	N
SSD	R	95-98 Closed when powered (De-energized)				
④	Control Power 控制电源	S	110	220	440	
			AC/DC 24-240V	AC 110V	AC 220V	AC 380V
			SS	○	○	○
			SSD	○	○	○

SS_电子式过载继电器_GB14048.4-2010
EOCR-SS

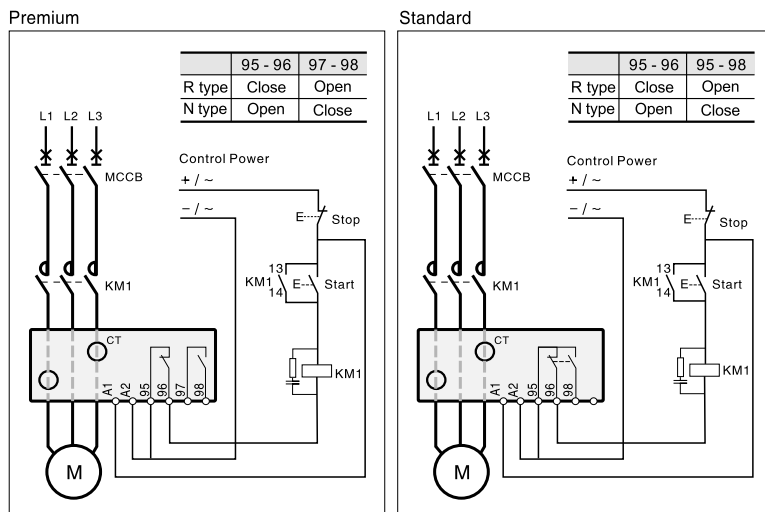
Description / 外观



A	B	C	D	E	F	G	H	I	
LED(PWR)	LED(TRIP)	LOAD	D-TIME	O-TIME	TEST	RESET	N/R mode	CT	
LED Indication / 动作显示									
				SS					
				PWR(Green)	TRIP(Red)				
Power on / 认可控制电源				On	Off				
Starting / 启动中				Blink	Blink				
Normal operation / 正常运转				On	Off				
Over-current / 超负荷				On	On				
Trip / 异常动作之时				Off	On				

H NVR (No Volt Release) / N:Fail safe, R:No Fail safe
To change setting parameters, turn the control power off and turn it on again, or press Reset button for initialization.
如果变更设定值时，应按EOCR电源的ON/OFF按钮或Reset按钮，进行产品初始化。

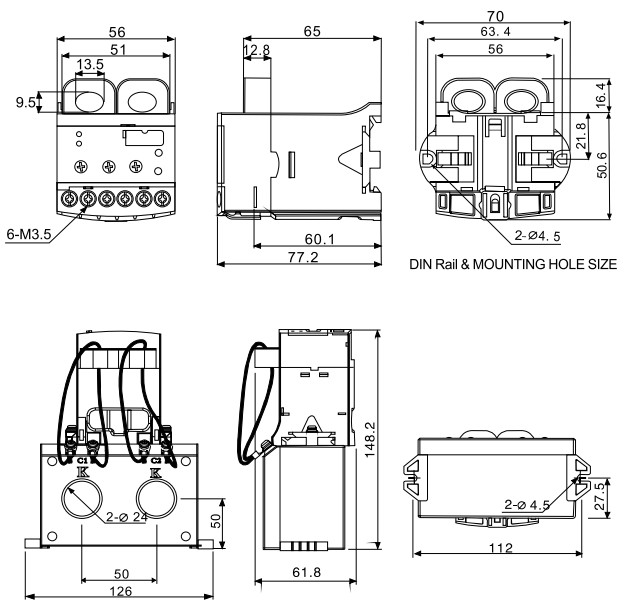
Wiring / 接线图



It is highly recommended to use an isolated control power. 控制电源，请使用绝缘

(mm ²)	(Inch)	(lb.in)
AWG	mm	N.m
(1...2.5)	(5/16)	(15)
18...14	8	1.7

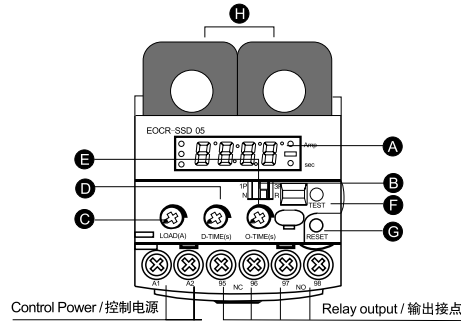
Dimensions / 外形尺寸



[External CT Type / CT组合型]

SSD_电子式过载继电器_GB14048.4-2010
EOCR-SSD

□ Description / 外观



A	B	C	D	E	F	G	H
LED(PWR)	N/R mode 1P/3P Select	LOAD	D-TIME	O-TIME	TEST	RESET	CT

E 1P : Sin gle-phase load / 一相负荷
N R 3P : Three-phase load / 三相负荷
 With 1P set the phase-loss detection is unavailable
 设定1P 设定之时, 不能运行缺相

To change setting paramaters,turn the control power off and turn it on again,
 or press Reset button for initialization.
 如果变更设定值时, 应按EOCR电源的ON/OFF按钮或Reset按钮, 进行产品初始化。

□ Trip Cause Indication / 动作原因指示

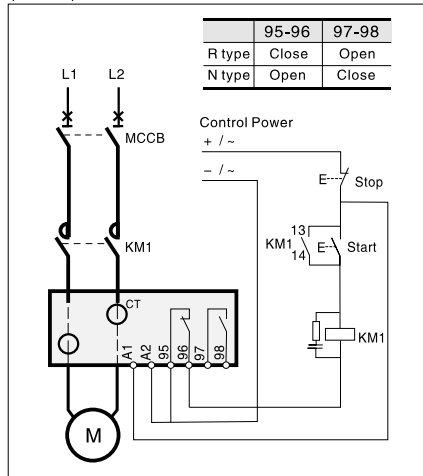
	Over Current (oc) 过电流	Tripped with 10A over-current 运转中感知10A相的过电流
	Phase Loss(PL) 缺相	Tripped by phase loss on L1 L1相的缺相而显示跳闸
		Tripped by phase loss on L2 L2相的缺相而显示跳闸
		Tripped by phase loss on L3 L3相的缺相而显示跳闸
	stall at starting 堵转	Tripped by stall while starting 感应启动堵转而跳闸并显示

□ Configuration Menu / 功能设定循序及设定菜单

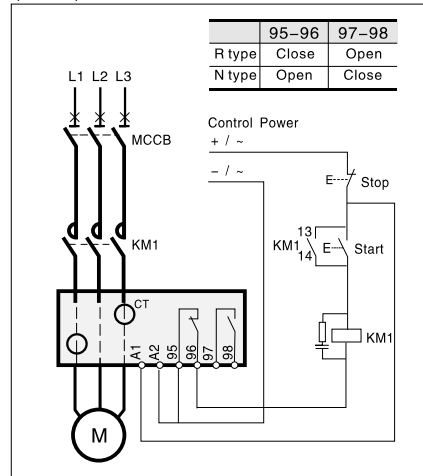
MODE	Description	Range	Remark
	Over current threshold 设定过电流	05 Type: 0.5A ~ 6A 30 Type: 3A ~ 30A 60 Type: 10A ~ 60A	0.5 ~ 6A: 0.1A steps 3~30A: 1A steps 10~60 A: 1A steps
	Starting delay time 设定启动延迟时间	1~30 sec	1sec steps
	Over current duration 设定过电流运作时间	0.5,1~10 sec	0.5sec 1~10sec(1sec steps)
	Test	Display"END" after elapsing 3 sec + preset O-Time 经过3秒+O-Time后显示END	
		Test is Not applicable under normal operation 运转中不能转换为Test模式 Operation time = 3 sec + O-Time	

□ Wiring / 接线图

(1Ø2W)



(3Ø3W)



※ It is highly recommended to use an isolated control power.
控制电源, 请使用绝缘

	8 (5/16)		(mm ²) AWG	(Inch) mm	(lb.In) N.m
			(1...2.5) 18...14	(5/16) 8	(15) 1.7

□ Dimensions / 外形尺寸

