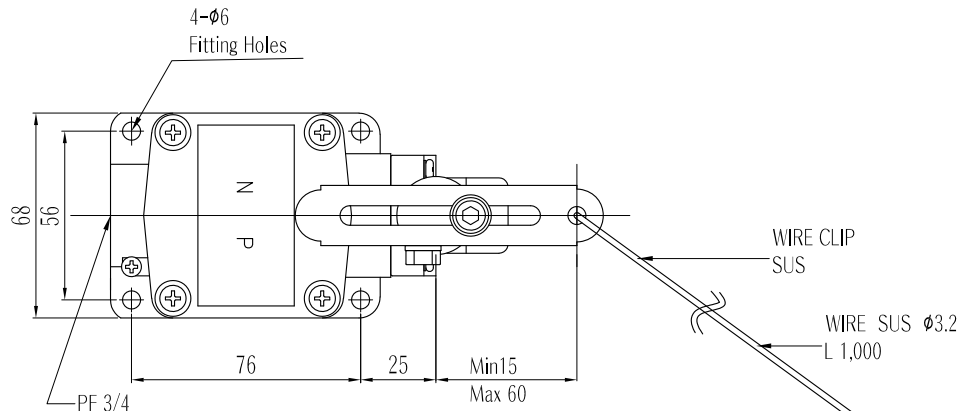


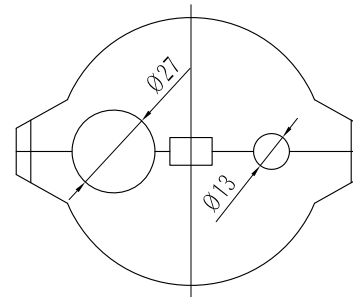
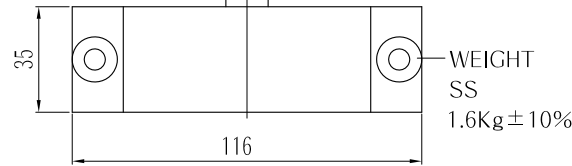
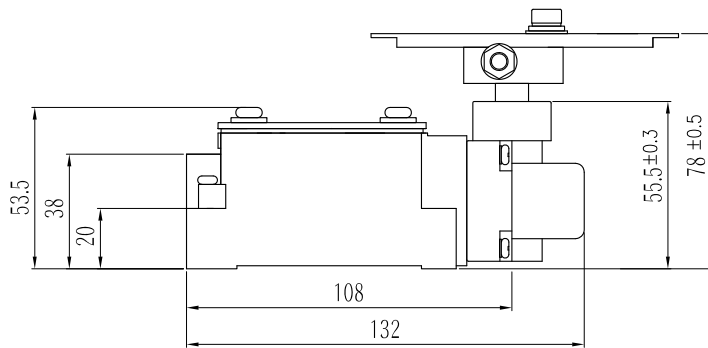
MARK	DATE	REVISION	REVISER	APP .BY
△				
△				
△				



MODEL No.	SW2MS-W
MATERIAL	HEAD & BODY - DIECAST BRASS BOLT, NUT & ETC. - SUS304
CONTACT	2CKT-DB, 1A1B, 250VAC 6A
PROTECTION GRADE	WATER & DUST PROOF - IP67
CABLE ENTRY	PF 3/4
COLOR	MAKER STANDARD
INSULATION RESISTANCE	100MΩ MIN. at 500V DC

■ Operating Characteristics

OF max.g	1,800
RF min.g	1,400
PT	10°
MD max.	5°
TT min	50°



FOR LINEAR DIMENSIONS	ISO2768-1 : CLASS OF TOLERANCE				
	0.5~3	f	Ⓜ	c	v
3~6	±0.05	±0.1	±0.2	±0.3	±0.5
6~30	±0.1	±0.2	±0.5	±1	±1.5
30~120	±0.15	±0.3	±0.8	±1.5	±2.5
120~400	±0.2	±0.5	±1.2	±2.5	±4
400~1000	±0.3	±0.8	±2	±4	±6
FOR ANGULAR DIMENSIONS	0~10	±1'	±1'30'	±3'	±3'
	10~50	±0'30'	±1'	±2'	±2'
	50~120	±0'20'	±0'30'	±1'	±1'
	120~400	±0'10'	±0'13'	±0'30'	±0'30'

SURFACE FINISH		-		-		-		-	
Nr.	DWG. NO.	TITLE/ NAME		MAT'L	QTY	REFERENCE			
DSND BY	CHKD BY	CHKD BY	APRV BY	VIEW	DATE				
U.H LEE	U.H LEE		J.K.HAN	3	2012.01.27				
TITLE OUT-LINE DRAWING (SW2MS-W)				MODEL		SW2MS-W			
				DWG. NO.		SW2MS-W-OUT			
				SCALE	SIZE	REV	SHEET		
1/1		A3		00		1/-			