

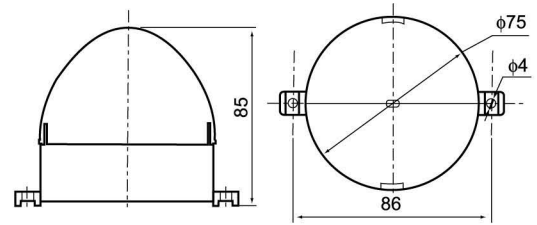
C-3072

LED
LED Steady /
Flashing / Strobe



- High brightness LED type
- Circular chassis with fixed, making installation easier.
- Principles of using high-tech electronic transfer
- In case of product using AC voltage, 12V to 24V DC power supply line is employe
- Material: Lens-PC, Body-ABS
- Certification: CE
- Protection class: IP30

External View Drawing



Model	Voltage	Current	Weight	Flashes Per Min.	Color
C-3072	DC12V	0.090A	0.34Kg	60-80/ Per Min.	Red
	DC24V	0.080A	0.34Kg		Orange
	AC110V	0.042A	0.51Kg		Green
	AC220V	0.021A	0.51Kg		Blue

C-3072 Series

Model	Voltage	Color	Sound
-------	---------	-------	-------

C-3072	12V	Red	J
	24V	Orange	
	110V	Green	
	220V	Blue	

Model	Voltage	Color	Sound
-------	---------	-------	-------

C-3072	12V	Red	J
	24V	Orange	
	110V	Green	
	220V	Blue	

Model	Voltage	Color	Sound
-------	---------	-------	-------

C-3072	12V	Red	J
	24V	Orange	
	110V	Green	
	220V	Blue	

Model	Voltage	Color	Sound
-------	---------	-------	-------

C-3072	12V	Red	J
	24V	Orange	
	110V	Green	
	220V	Blue	